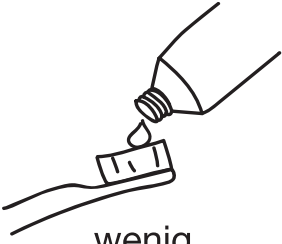
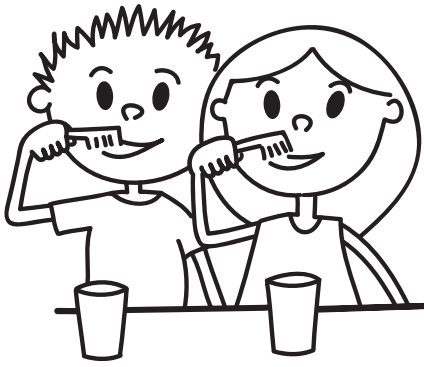


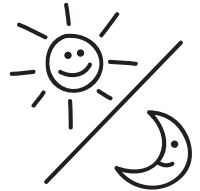
# Jetzt ist Zahnputzzeit!



wenig  
Zahnpasta

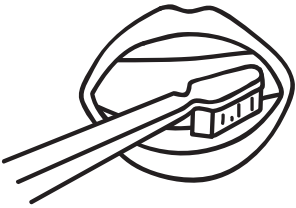


mindestens  
2 Minuten



morgens und  
abends

**K**



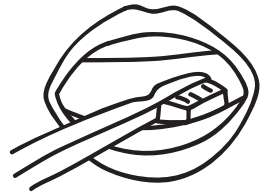
**K**aufflächen  
bürsten

**A**



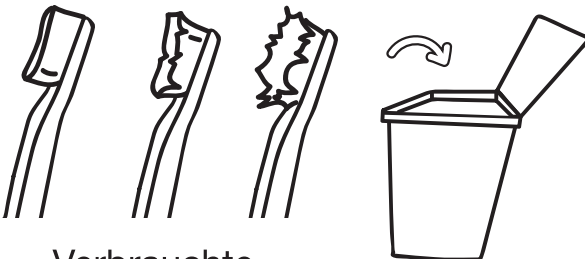
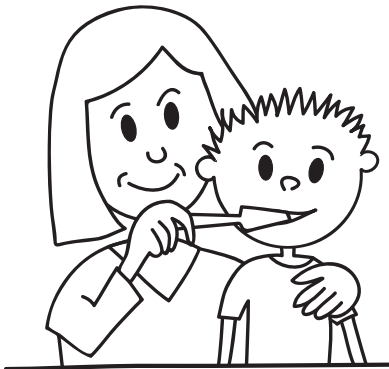
**A**ußenflächen  
kreisend putzen

**I**



**I**nnenflächen  
auswischen

Eltern:  
2x pro Tag  
nachputzen



Verbrauchte  
Zahnbürste auswechseln